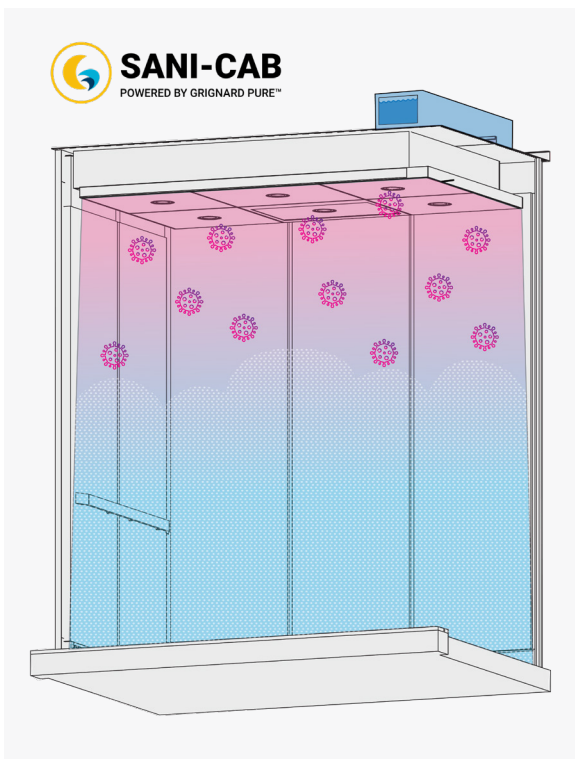


Cab Sanitization by **Columbia Elevator**

You've trusted us for over 50 years with cabs, entrances, and door systems. Trust us now to give the elevator a protective layer. Columbia Elevator, in partnership with Grignard Pure, is bringing the first-of-its-kind, only **EPA-approved** (Environmental Protection Agency), antimicrobial air treatment to the elevator industry.

<https://www.epa.gov/newsreleases/epa-approves-emergency-exemption-antiviral-air-treatment>



EPA Testing Confirmed: 99.5% Effectiveness in 30 Seconds

In 2021, the EPA utilized its own Office of Research & Development to test the effectiveness of various sanitization technologies at reducing SARS-CoV-2 virus in a real-world scenario, with the following results for Grignard Pure:

Virus Sampling Time	% Virus Reduction
0 Sec	99.50%
90 mins	99.93%

Dual Protection: Continuous Sanitization for Air & Surface

In the EPA testing, the results showed the effectiveness of Grignard Pure in killing 99.93% of the virus in the air, before it even settled on surfaces. Furthermore, Grignard Pure maintains an efficacy of 98.7% for surface disinfection after 90 minutes, so it continues to inactivate residual virus that do manage to settle on surfaces.

<https://www.epa.gov/covid19-research/results-aerosol-treatment-technology-evaluation-grignard-pure>

How the Elevator Environment is Unique

New microbes are constantly entering the cab when passengers sneeze, cough, or even just breathe

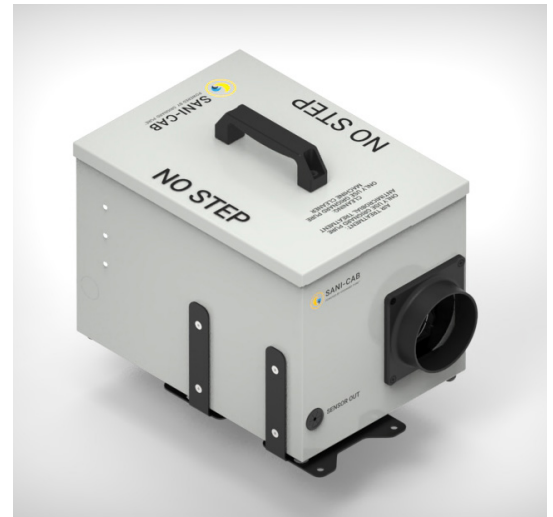
It's a Confined Space

New, Contaminated Air is constantly entering the cab each time the doors open

Learn more: https://c0abbe95-e50e-4740-9b9b-553e0cee1227.usrfiles.com/ugd/c0abbe_f3f66a870514460cb450c962cdb3e6ca.pdf

Features

- Complete System designed for new and retrofit applications
- Sani-Cab detects levels of Grignard Pure in the air and automatically adjusts to maintain the effective concentration
- Sensor utilizes laser diffraction technology and takes readings once every second to supply highly accurate measurements even during rapid changes of fresh air exchange from door openings



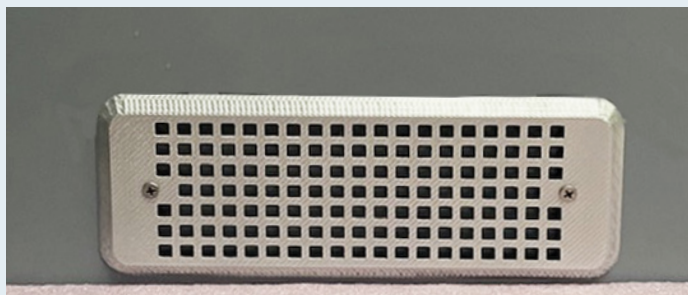
The Sani-Cab system dispenses Grignard Pure™, an antimicrobial air treatment, through an advanced, technologically-connected system that measures and automatically adjusts the amount of solution that is dispensed into the air.



Integrated assembly mounted on top of the elevator.



Easy installation includes low profile duct to distribute Grignard Pure evenly throughout elevator car.



Decorative vent cover installed on the interior panel for even dispensing of Grignard Pure



Simple modification on side panel to install duct for dispensing.

Technical Data

Mechanical Properties	
Dimensions	Width: 360mm (14.188") without nozzle; 394mm (15.5") with nozzle Height: 254mm (10") without handle; 305mm (12") with handle Depth: 259mm (10.188")
Materials	Housing: Steel Reservoir, Inlet/Outlet Manifold: HDPE
Finish	Powder Coat
Mounting	Horizontal
Capacity	1,000 mL
Heating Element	350 W
Air Pump	Yes
Liquid Pump	Peristaltic (Non-self-priming), 10 ft Vertical Column
Cleaning Port	Yes
Gain Adjustment	0-100%
Fan Speed Adjustment	0-100%
Environment	
Operating Temperature	-20°C to 55°C, -4°F to 131°F
Storage Temperature	-40°C to 85°C, -40°F to 185°F
Relative Humidity	0 to 95% Non-condensing
Ingress Protection	IP52
Cooling	Convection
Computer	
Processor	32 bit Microcontroller (MIPS)
Software	
Operating System	None
Update	Ethernet Port
Electrical Properties	
Operating Voltage	110 VAC
Power Consumption	365 W
Interfaces	
User Interface	Manual Push Button, Rotary Switches, Autonomous Mode, Controller Connected, 10/100 Ethernet Port for Configuration and Detailed Status
Operating State	LED or Hosted Webpage via laptop
Digital In	XLR 5 Pin Input Connector
Digital Out	XLR 5 Pin Output Connector
Alarm (Relay In)	Terminal Block
Alarm (Relay Out)	Terminal Block
Fluid Level Sensor Input	Calculated fluid Level In Atomizer Software
RS485	2-wire Half Duplex (RDM, DMX Protocol)
USB	Internal Craft Access Only

Frequently Asked Questions

New Construction vs. Modernization?

Sani-Cab® powered by Grignard Pure: New Construction & Modernization.

It is installed and mounted on the outside of the cab on the car top so it can be easily added to any new construction or retrofitted during any modernization project.

Is Sani-Cab® a proactive approach and why?

Sani-Cab® powered by Grignard Pure is a proactive solution as it fills the entire environment of the cab with an antimicrobial agent that kills the viruses on contact before they have a chance to land on surfaces or reach the other individuals in the cab.

Can Sani-Cab® be used in any size elevator?

Yes, it works well no matter the size of the environment.

Sani-Cab® powered by Grignard Pure administers an invisible antimicrobial vapor that fills the interior of the car, no matter the size. It is powered by a closed loop system to provide continuous feedback to the Sani-Cab® controller. This constantly monitors the levels of the viracide in the air to ensure maximum efficacy while maintaining the levels low enough to remain imperceptible by the riding public.

How can I purchase an air sanitizing solution from Columbia?

Sani-Cab® powered by Grignard Pure can be purchased through Columbia for new construction.

For modernization projects, **Sani-Cab® powered by Grignard Pure** can be purchased as an aftermarket product from one of Columbia's distributor partners. All Grignard Pure solution refills can be ordered through our distributor partners.

What to look for in Air Sanitization Solutions for Elevators

- The ability to inactivate virus particles in seconds (not minutes) to keep up with cleaning the new air that is constantly being introduced
- The ability to customize the amount of treatment based on the number of people and size of the cab
- Something that won't produce any toxins or pose any new health hazards
- Something that won't degrade the materials in the car