

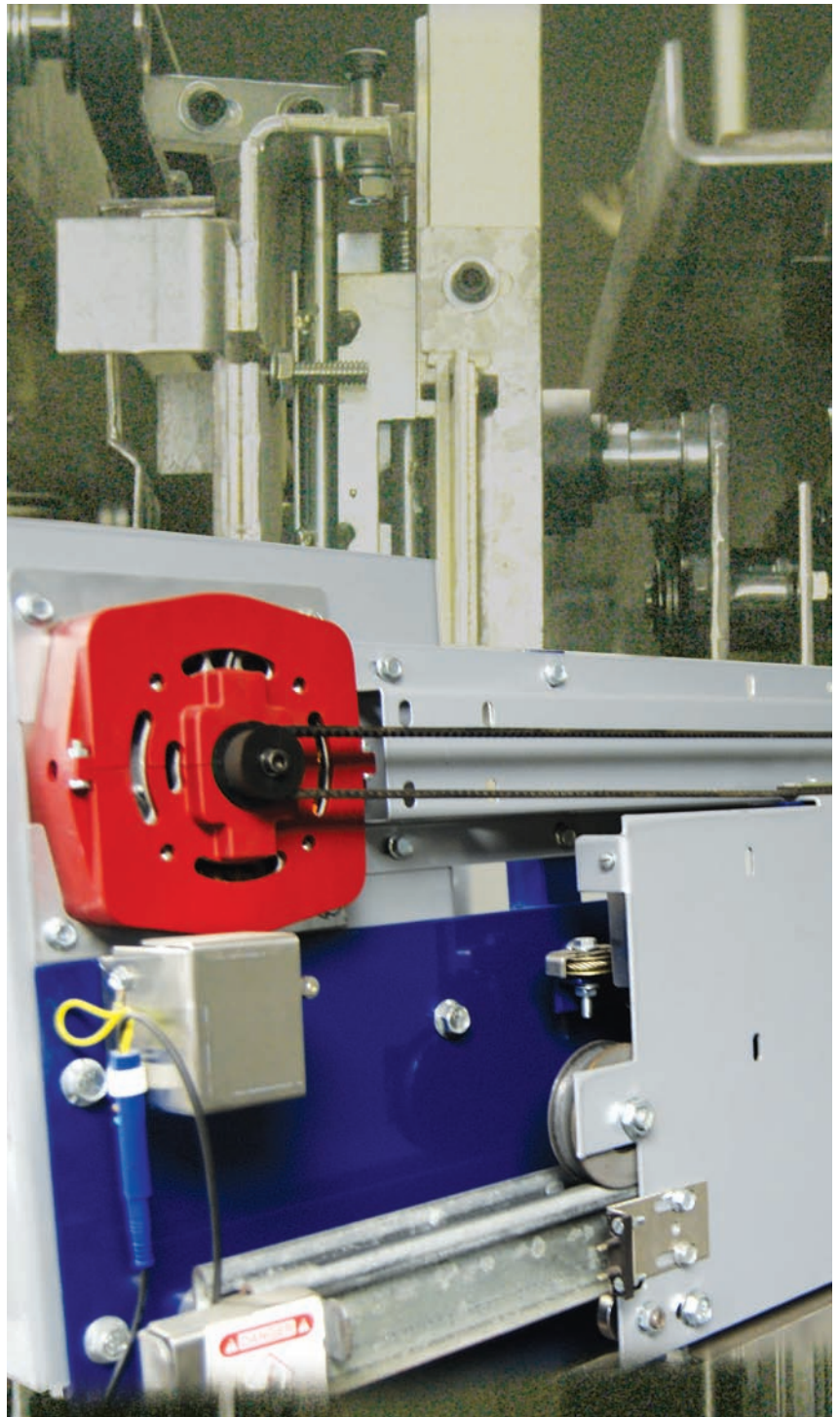
# Linear Operator and Track Options

Designed for Commercial, LULA and Residential applications, Columbia Elevator's Patented (7424935) ALURE® car operator and entrance system utilizes world-class technology sure to meet the demands of the most discriminating customer. The ALURE system is currently available in a 36" opening width, in both 3 and 2 speed configurations. The ALURE is fully automatic and fully tested to the 2-hour fire rating requirements of A17, thus incorporating commercial safety elements and eliminating potential pinch point and entrapment issues common in typical residential design.

The 36" 3 Speed configuration requires just 53" of hoistway width and the entrance is delivered assembled, complete with a 3-way adjustable sill and sill support. Both the 2 and 3 speed models are available in 80 and 84" opening heights to fit most installations. Choose your finish from 31 standard baked enamel paint colors or stainless steel. Or you may choose to order your entrances in a primed finish so your customer's design elements can be custom matched on-site.

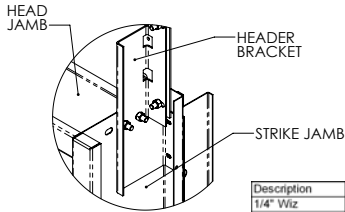
Latest technology ... safety for your customer their families ... high degree of pre assembly for labor and time saving installation... one purchase order for your entrance, track and operator make the ALURE system a smart choice.

Don't forget to get a quote from Columbia Elevator Products for your cab.



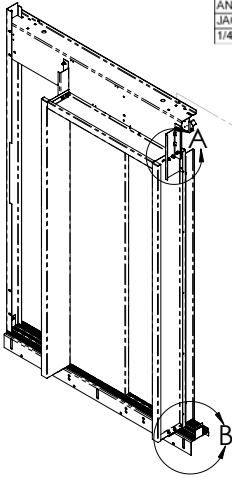
# Linear Operator / Track - Entrances

888-858-1558  
www.columbiaelevator.com  
info@columbia-elevator.com

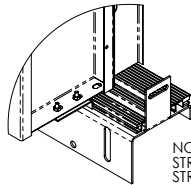


DETAIL A  
SCALE 1 : 6

Description	Place	Quantity
1/4" W/iz	Strike to strike extension	5
1/4" Sq.	Sill to "jamb to sill bracket"	2
5/16" Drive Stud	Jamb to "jamb to sill bracket"	4
3/8" W/iz	Head jamb header bracket bolts	4
3/8" W/iz	Header to header bracket	4
3/8" W/iz	Strike to head extension	2
3/8" W/iz	Header bracket to frame	4
3/8" Sq.	Sill to sill support	4
ADJ ANCHOR	A	2
ANCHOR	B	2
JACK BOLT	C	4
1/4-20 TRUSS	HEADER BRACKET TO JAMB	4

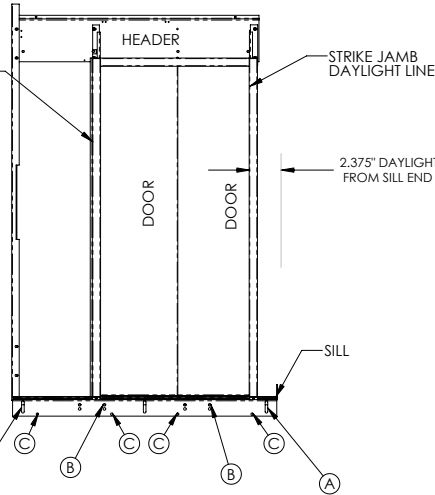


HEADER TO WALL BRACKET

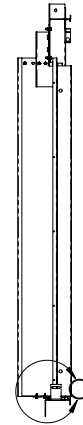


DETAIL B  
SCALE 1 : 6

NOTE:  
STRUT NOT USED ON  
STRIKE JAMB SIDE



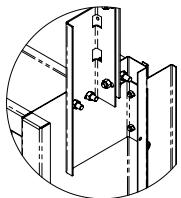
FINISHED FLOOR  
BY OTHERS



DETAIL C  
SCALE 1 : 6

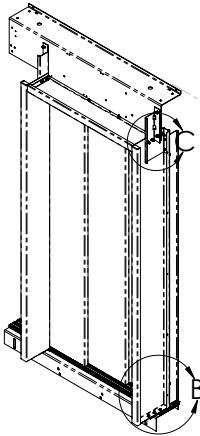
DO NOT SCALE DRAWING	UNLESS OTHERWISE SPECIFIED:	MATERIAL	NAME	DATE	TITLE	DWG. NO.	REV
PROPRIETARY AND CONFIDENTIAL: THE INFORMATION CONTAINED IN THIS DRAWING IS THE SOLE PROPERTY OF ELEVATOR SOLUTIONS INTERNATIONAL, INC. ANY REPRODUCTION IN PART OR AS A WHOLE WITHOUT THE WRITTEN PERMISSION OF ELEVATOR SOLUTIONS INTERNATIONAL, INC. IS PROHIBITED.	DIMENSIONS ARE IN INCHES UNLESS OTHERWISE SPECIFIED: DECIMALS: 2 FRACTIONS: 8 ANGULAR PATCHES: 1/8" MIN. 1/8" PLACE DECIMAL: 1/16" 3/32" PLACE DECIMAL: 1/32" 1/64" PLACE DECIMAL: 1/64"		KHL	2/28/2007	ALURE 2SPD ENTRANCE	D45426	
			MODIFIED	Mevins	4/11/2007		
						ELEVATOR SOLUTIONS INTERNATIONAL INC. ARKANSAS CITY, KS	

## Two-Speed

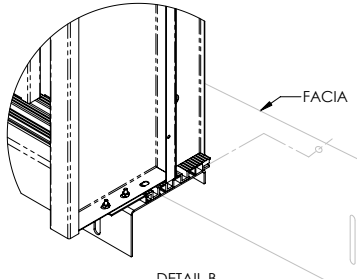


DETAIL C  
SCALE 1 : 6

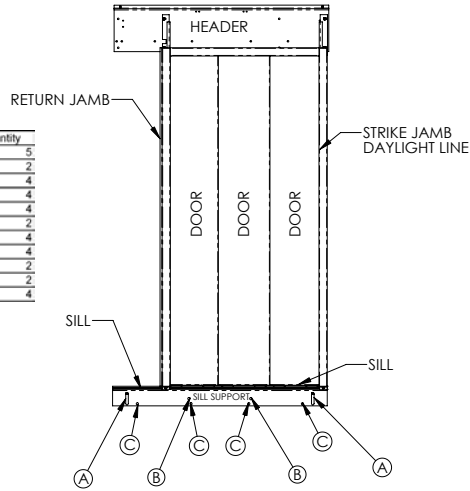
Description	Place	Quantity
1/4" W/iz	Strike to strike extension	5
1/4" Sq.	Sill to "jamb to sill bracket"	2
5/16" Drive Stud	Jamb to "jamb to sill bracket"	4
3/8" W/iz	Frame-head jamb-header bracket	4
3/8" W/iz	header to header bracket	4
3/8" W/iz	strike to head extension	2
3/8" W/iz	header bracket to frame	4
3/8" Sq.	Sill to sill support	4
ADJ ANCHOR	A	2
ANCHOR	B	2
JACK BOLT	C	4



HEADER TO WALL BRACKET



DETAIL B  
SCALE 1 : 6

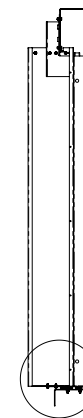


SILL

SILL

SILL SUPPORT

SILL SUPPORT



FINISHED FLOOR

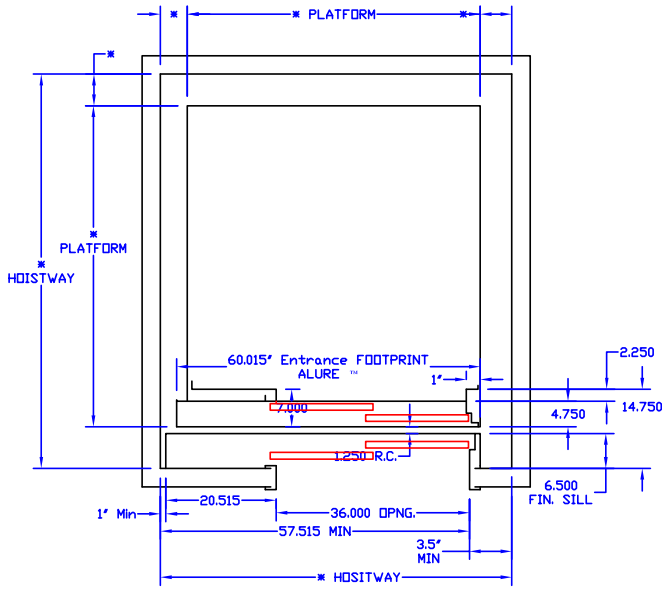
DETAIL A  
SCALE 1 : 6

DO NOT SCALE DRAWING	UNLESS OTHERWISE SPECIFIED:	MATERIAL	NAME	DATE	TITLE	DWG. NO.	REV
PROPRIETARY AND CONFIDENTIAL: THE INFORMATION CONTAINED IN THIS DRAWING IS THE SOLE PROPERTY OF ELEVATOR SOLUTIONS INTERNATIONAL, INC. ANY REPRODUCTION IN PART OR AS A WHOLE WITHOUT THE WRITTEN PERMISSION OF ELEVATOR SOLUTIONS INTERNATIONAL, INC. IS PROHIBITED.	DIMENSIONS ARE IN INCHES UNLESS OTHERWISE SPECIFIED: DECIMALS: 2 FRACTIONS: 8 ANGULAR PATCHES: 1/8" MIN. 1/8" PLACE DECIMAL: 1/16" 3/32" PLACE DECIMAL: 1/32" 1/64" PLACE DECIMAL: 1/64"		KHL	2/13/2007	ALURE 3SPD ENTRANCE	D45425	
			MODIFIED	Mevins	4/12/2007		
						ELEVATOR SOLUTIONS INTERNATIONAL INC. ARKANSAS CITY, KS	

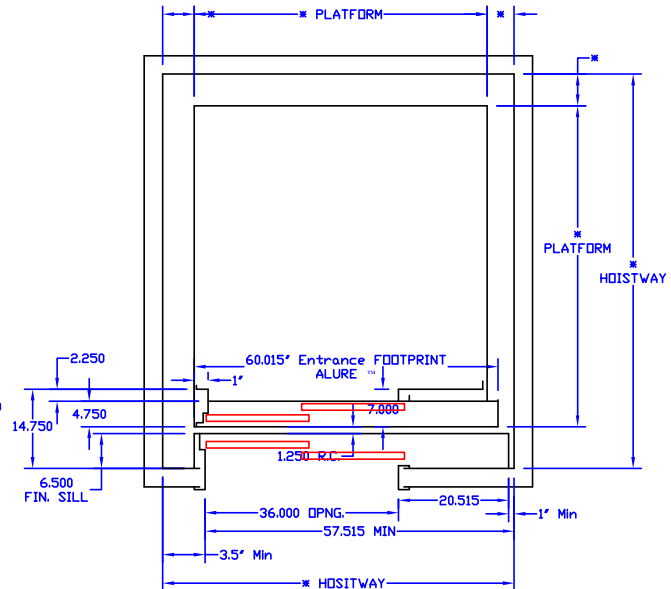
## Three-Speed

# Linear Operator / Track - Hoistway Space

888-858-1558  
www.columbiaelevator.com  
info@columbia-elevator.com



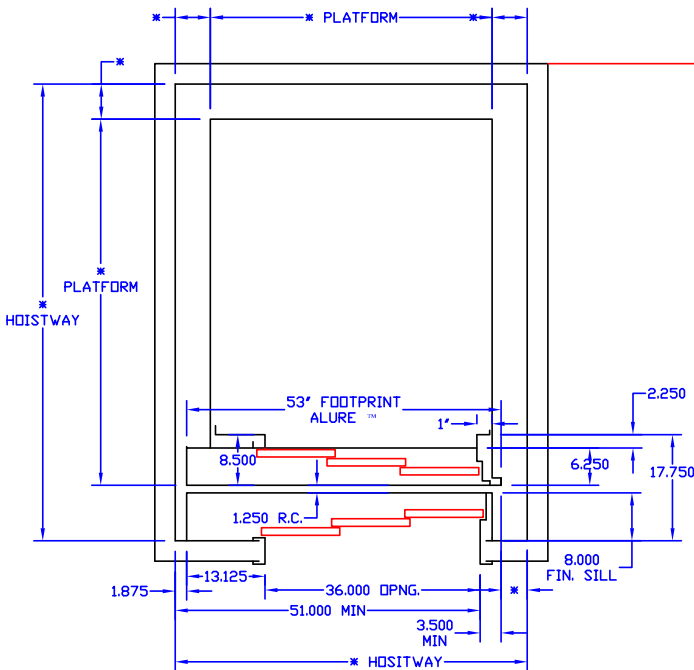
RIGHT HAND



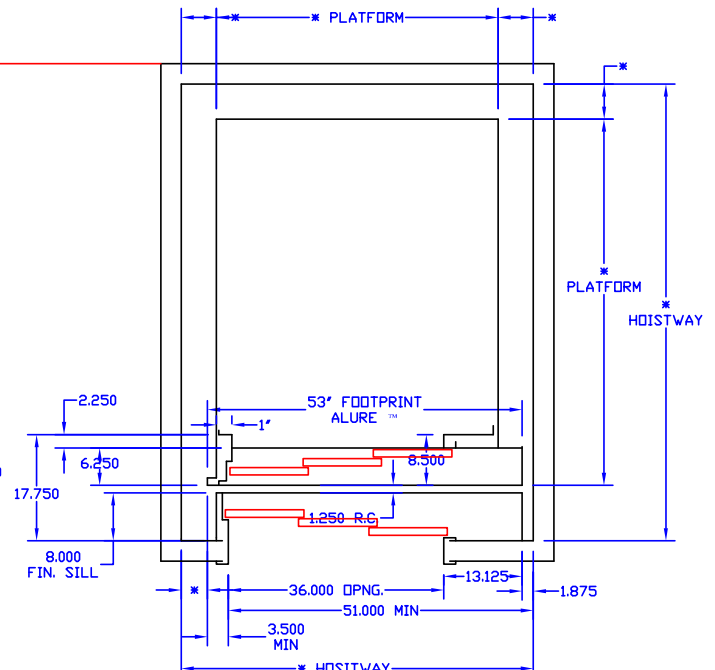
LEFT HAND

\* DETERMINED BY  
ELEVATOR CONTRACTOR

## Two-Speed



RIGHT HAND



LEFT HAND

\* DETERMINED BY  
ELEVATOR CONTRACTOR

## Three-Speed

# Linear Operator / Track - Power

888-858-1558  
www.columbiaelevator.com  
info@columbia-elevator.com

## POWER SUPPLY:

- AC voltage range: 115 or 230 V +10%, -15%. AC/DC, voltage specified on motor
- Frequency supply: 50-60 Hz.
- Minimum supply: 70 mA, 13 W.
- Open door power: 0.6 A 80 W.
- Nominal power: 0.93 A 140 W.
- Maximum power: 1.38 A 190 W.

## MOTOR:

- Asynchronous three phase: 6 poles.
- Voltage supply, as specified by sticker on front of Motor:  
115 V (U.S. & Canada) or 230 V (Europe)
- Power: 250 W.
- Thermic class: B-130°C.
- Nominal speed: 900 RPM

## INPUTS:

- Impedance: 20 KΩ.
- Voltage: 12-230 V AC / DC.

## OUTPUTS:

- Contacts: Switched.
- R. contact: 50 mW.
- Switch time: 5 ms.
- Output current, Maximum: 1A
- Voltage: 12-250V, AC only

## PERFORMANCE:

- Open Speed: 200-1000 mm/s.
- Close speed: 150-600 mm/s.
- Maximum acceleration: 800-1500 mm/s<sup>2</sup>.
- Safety force: 40-150 N adjustable.
- Maintenance torque (Opened Door): 80 N / cm.



Northeast • Southeast • Midwest • West Coast • Canada  
www.columbiaelevator.com